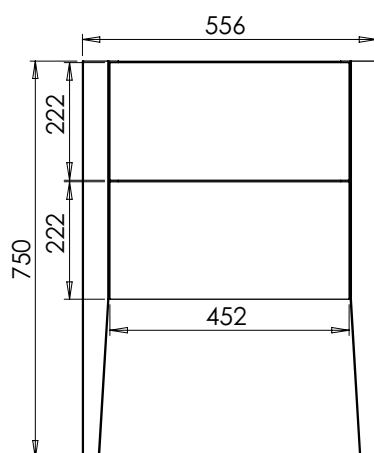
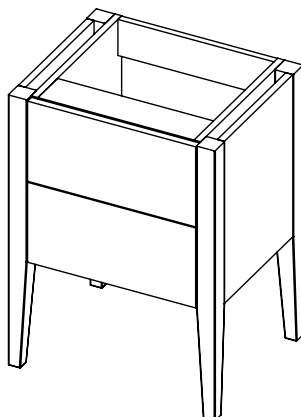
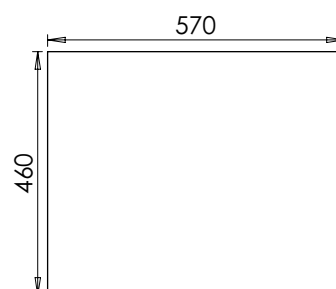
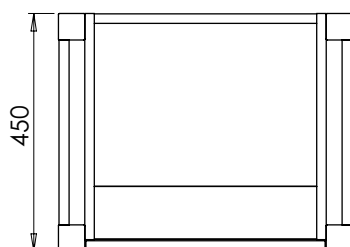




**BARTON SPECIFICATION GUIDE**



Worktop for use with sit on  
basin 650-XX-WT5746/25



#### RANGE

## Barton (635)

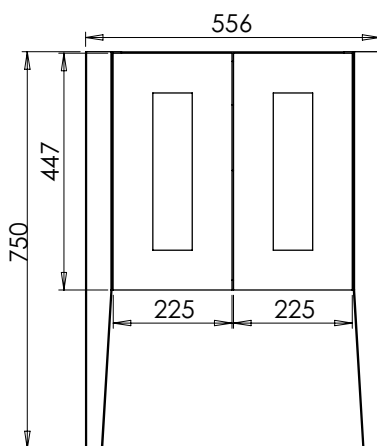
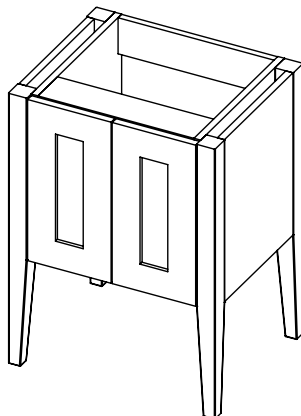
All dimensions are in millimetres

#### DESCRIPTION

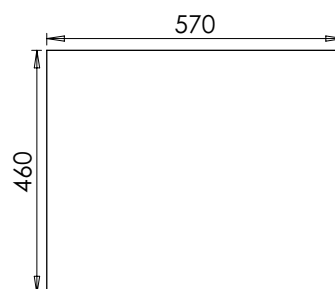
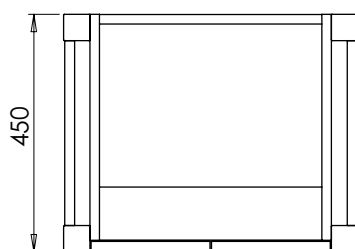
Washstand 2 drawer unit (WS55D2)

#### DATE

December 2024



Worktop for use with sit on  
basin 650-XX-WT5746/25



#### RANGE

## Barton (635)

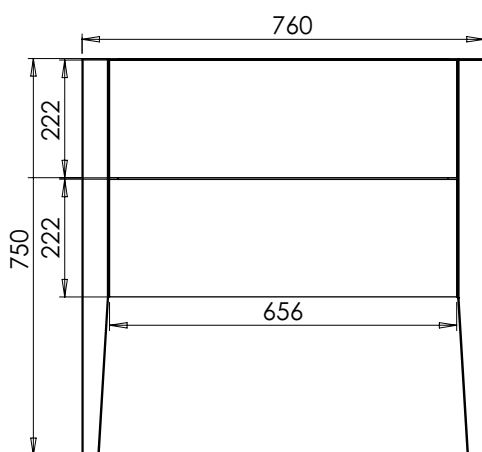
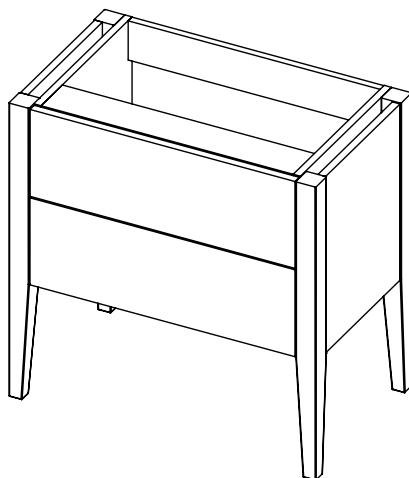
All dimensions are in millimetres

#### DESCRIPTION

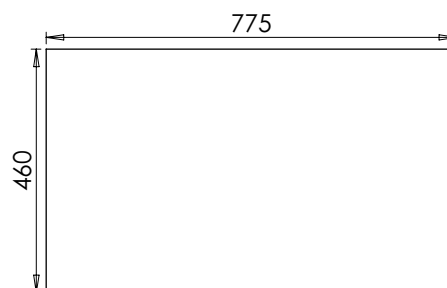
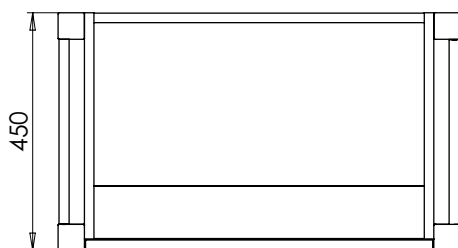
Washstand 2 door unit (WS55DO)

#### DATE

December 2024



Worktop for use with sit on basin  
650-XX-WT7746/25



#### RANGE

## Barton (635)

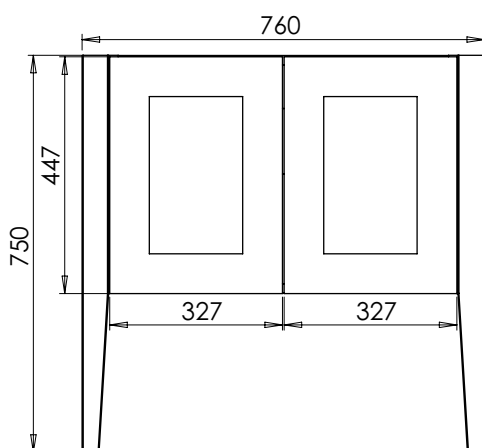
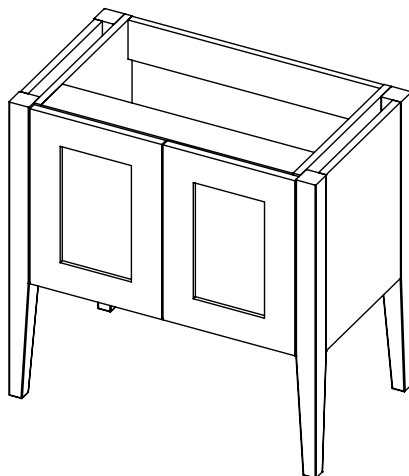
All dimensions are in millimetres

#### DESCRIPTION

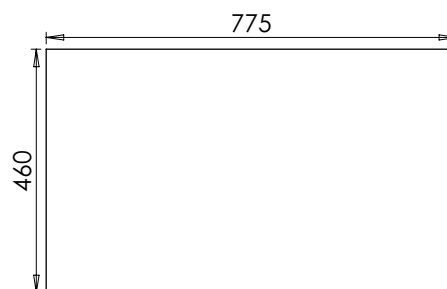
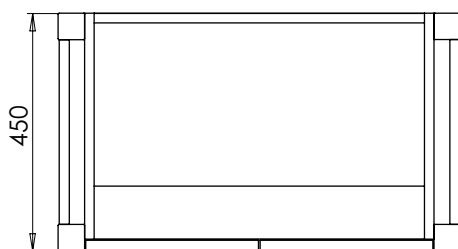
Washstand 2 drawer unit (WS76D2)

#### DATE

December 2024



Worktop for use with sit on basin  
650-XX-WT7746/25



#### RANGE

## Barton (635)

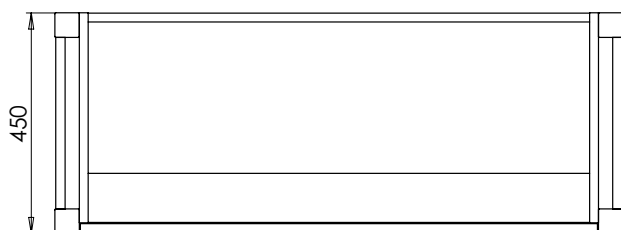
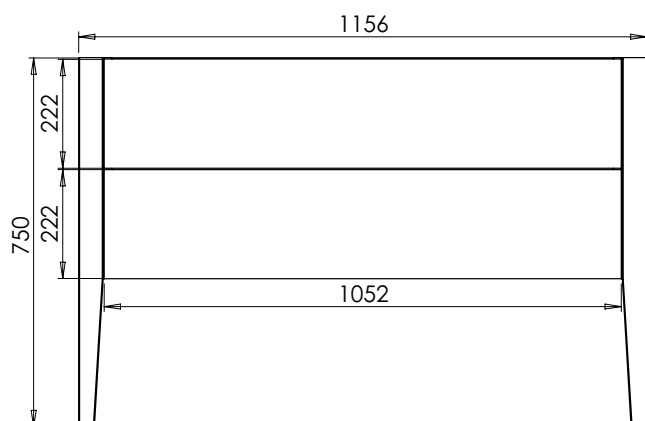
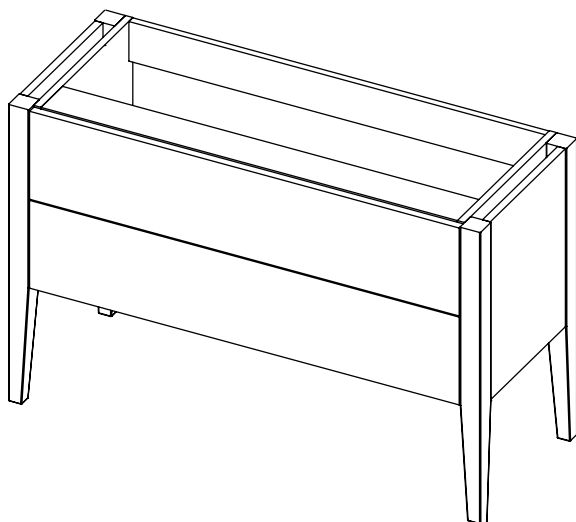
All dimensions are in millimetres

#### DESCRIPTION

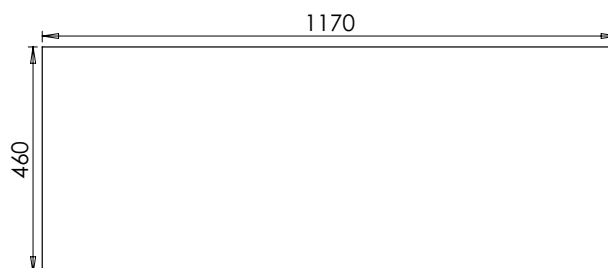
Washstand 2 door unit (WS76DO)

#### DATE

December 2024



Worktop for use with sit on basin  
650-XX-WT11746/25



## RANGE

# Barton (635)

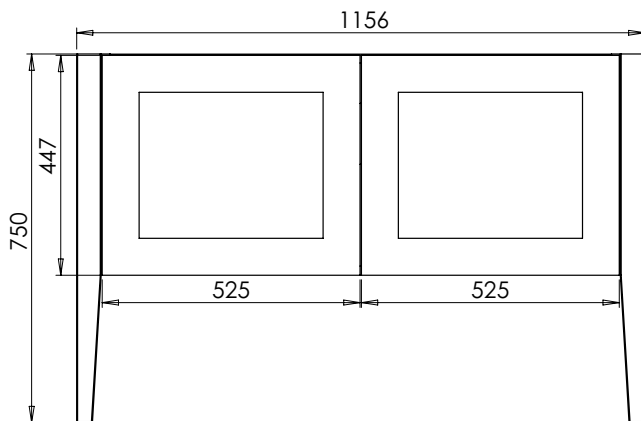
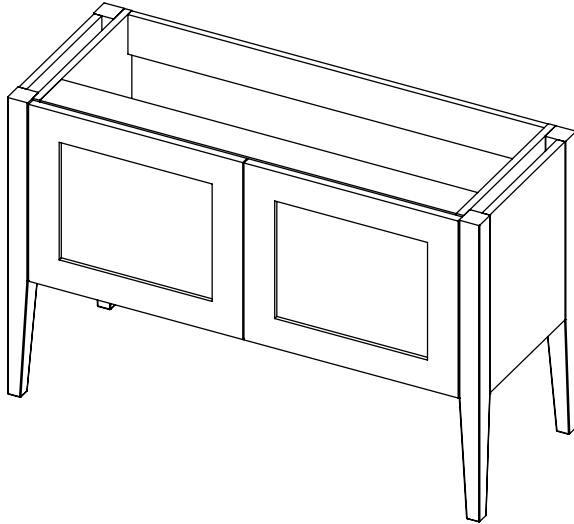
All dimensions are in millimetres

## DESCRIPTION

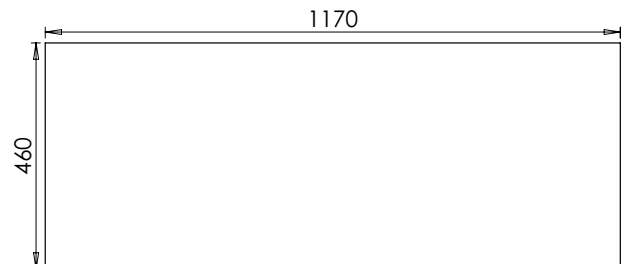
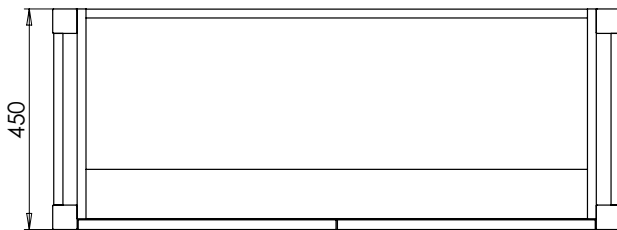
Washstand 2 drawer unit (WS115D2)

## DATE

December 2024



Worktop for use with sit on basin  
650-XX-WT11746/25



#### RANGE

## Barton (635)

All dimensions are in millimetres

#### DESCRIPTION

Washstand 2 door unit (WS115DO)

#### DATE

December 2024

**E:** [sales@burbidgebathroommakers.co.uk](mailto:sales@burbidgebathroommakers.co.uk)  
**T:** 024 7667 1600  
**W:** [burbidgebathroommakers.co.uk](http://burbidgebathroommakers.co.uk)

Burnsall Road, Canley, Coventry,  
West Midlands CV5 6BS